



# Building a Sustainable Future for the Willamette

Over the past decade, the Willamette River Initiative has succeeded in catalyzing and accelerating river restoration on the Willamette, the lifeblood of western Oregon and a river basin challenged by pollution, climate change and development pressures. Our long-term funding commitment has enabled restoration groups to scale up, tackling many more complex river restoration projects and dramatically increasing their success. Our partnerships with other funders have further leveraged impact.

The trust and relationships developed over the past 10 years have built a foundation for collaboration. A strategic focus on continuous improvement, shared learning and goals, and science-based priorities has enabled our dozens of partners to accomplish more than we imagined possible.

## INNOVATING TOWARD A NETWORK

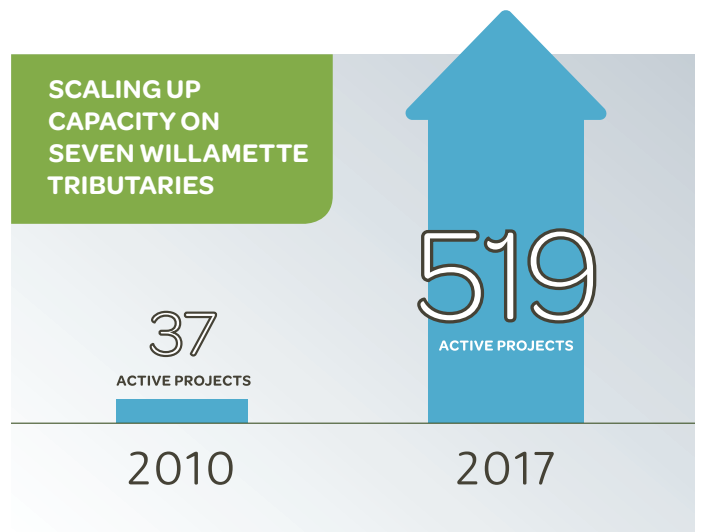
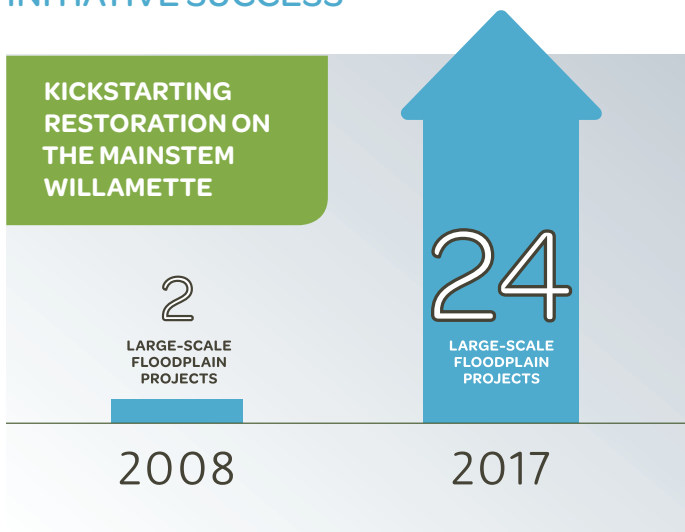
Now, WRI is transforming into a community-driven network that will support its members in accelerating their progress on river health, clean water and equitable communities.

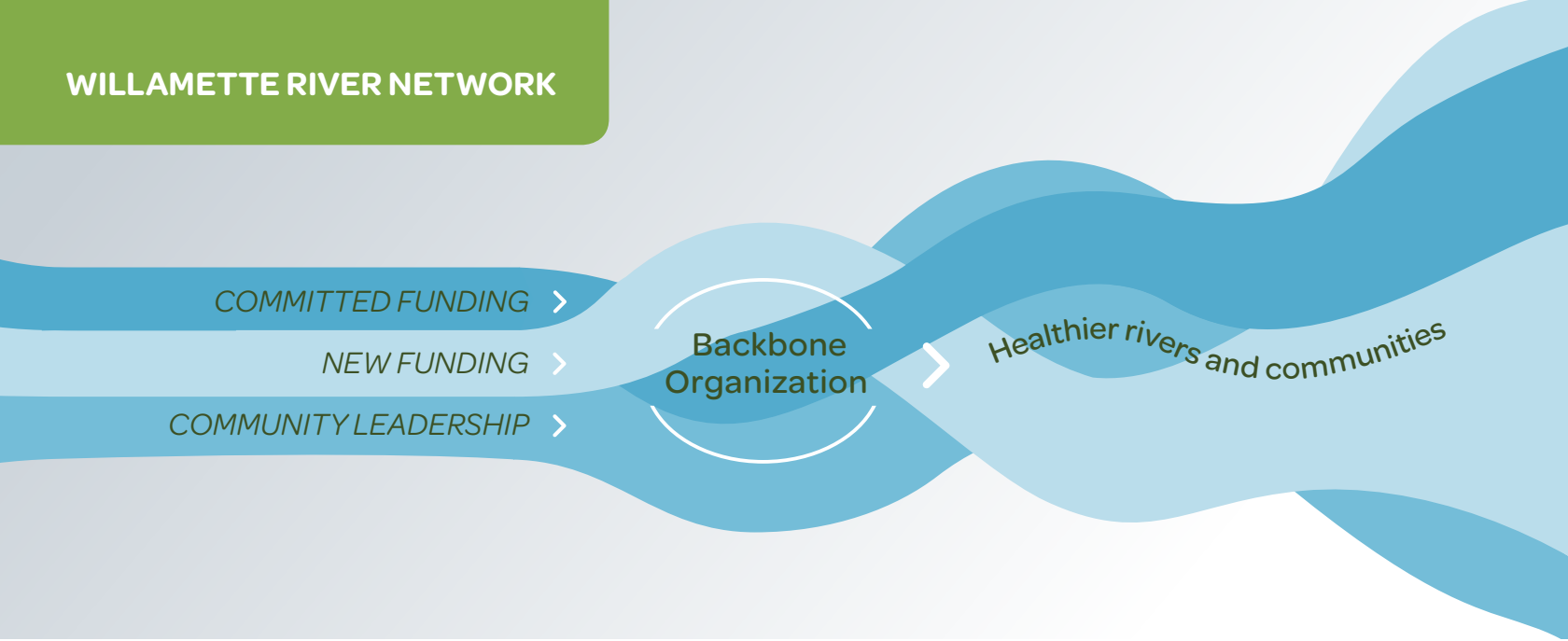
At the center of this new network will be a backbone organization, the Willamette River Network, which will continue and expand upon many of WRI's most successful strategies.

The backbone organization will provide essential services, regional coordination and fundraising, so our partners can do more of what they do best:

- ➔ Undertake restoration projects that create more fishable, swimmable and drinkable waterways for all
- ➔ Catalyze and support diverse, visionary leadership
- ➔ Build resilience in the face of climate change impacts on our rivers and communities
- ➔ Partner with cities, farmers and foresters to protect riverside habitat

## INITIATIVE SUCCESS





## A FOCUS ON EQUITY

The Willamette River Network will continue to champion river restoration while engaging a broader, more diverse set of partners and projects. Equity, inclusion and community wellbeing will be woven deeply into its mission. The Network will enable partners to work together toward a more equitable river movement. In pursuit of this goal, the Network will seek to:

- ➔ Remove the barriers that exclude some communities from having a say in their rivers' future and accessing the benefits rivers provide
- ➔ Focus on the leadership of the most-impacted communities
- ➔ Ensure the benefits and impacts of river health are shared equitably among all

## THE TIME IS NOW

The next six months are critical as we grow a broader funding partnership for this innovative model. The Initiative's strategies have drawn attention, spurred action and generated results that outpaced our most optimistic projections.

Meyer Memorial Trust has committed \$2 million over the next four years to ensure the success of the Willamette River Network. Our approach is born of proven experience and audacious ambition. We seek funding partners for four core needs:

- ➔ Organizational support for the innovative, equity-focused backbone organization
- ➔ Support for long-term, strategic, scaled river restoration projects and tracking progress over time
- ➔ Support for equity-related capacity among both marginalized and dominant-culture partners
- ➔ Support for projects that enable people, communities and rivers to thrive together

Join us as a partner to co-create the future, building on our proven results.

➔ [www.willametteinitiative.org](http://www.willametteinitiative.org)